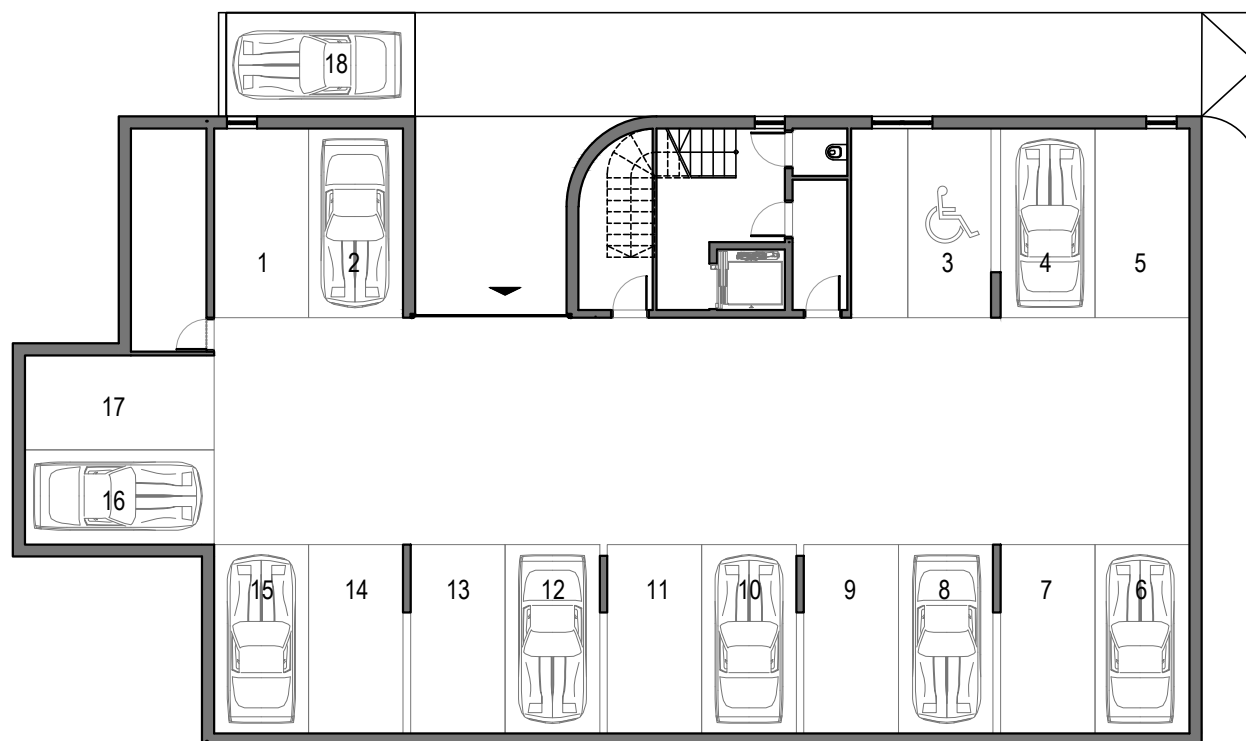


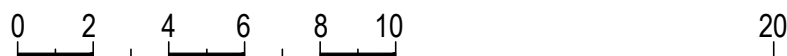
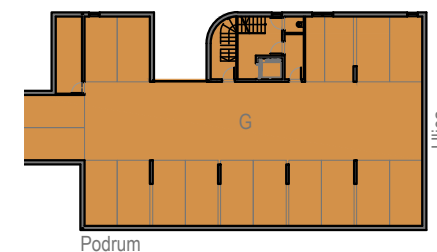


*gde snovi počinju*

Stambeni objekat na k.p.16604, Zemun



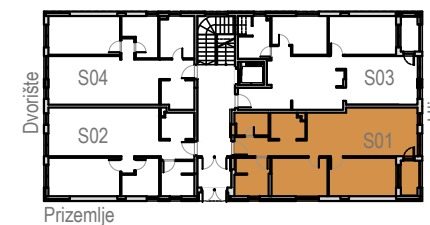
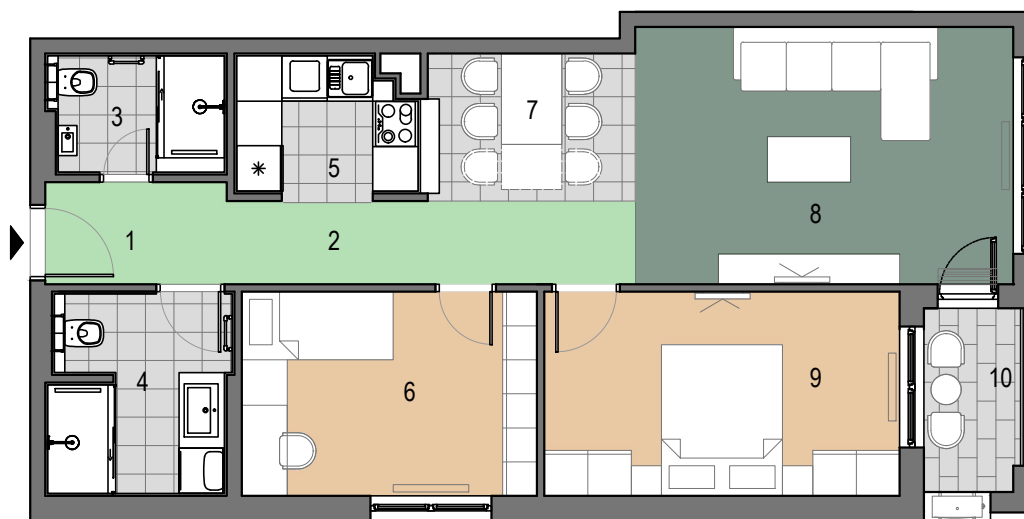
Garaža	m <sup>2</sup>
1 parking mesto	12.50
2 parking mesto	12.50
3 parking mesto	18.98
4 parking mesto	12.97
5 parking mesto	12.50
6 parking mesto	12.50
7 parking mesto	12.82
8 parking mesto	12.82
9 parking mesto	12.85
10 parking mesto	12.85
11 parking mesto	12.85
12 parking mesto	12.85
13 parking mesto	12.82
14 parking mesto	12.82
15 parking mesto	12.50
16 parking mesto	12.50
17 parking mesto	12.50
18 parking mesto	13.72
<b>Ukupno</b>	<b>235.85</b>



# STAN 01 - dvosoban stan

prizemlje

Stan 01 - Dvosoban stan	m <sup>2</sup>
1 ulaz	3.09
2 hodnik	2.86
3 toalet	3.49
4 kupatilo	6.04
5 kuhinja	4.18
6 spavaća soba	10.27
7 trpezarija	8.25
8 dnevna soba	16.67
9 spavaća soba	12.40
<b>Ukupno zatvoreno</b>	<b>67.25</b>
10 lođa	3.08
<b>Ukupno</b>	<b>70.33</b>



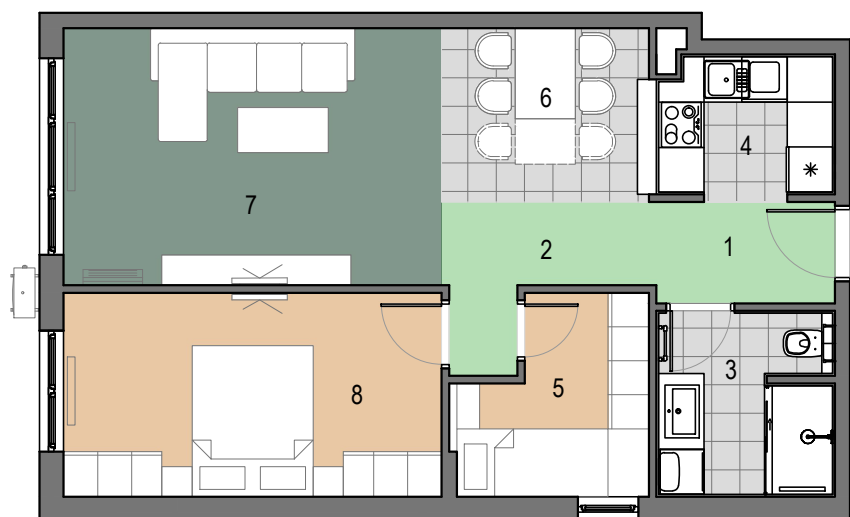
GOĐINJA  
VALOŠ  
*gde snovi postaju stvar*

Stambeni objekat na k.p.16604, Zemun

# STAN 02 - dvosoban stan

prizemlje

Stan 02 - Dvosoban stan	m <sup>2</sup>
1 ulaz	3.02
2 hodnik	4.06
3 kupatilo	5.38
4 kuhinja	4.15
5 spavaća soba	5.72
6 trpezarija	6.26
7 dnevna soba	16.73
8 spavaća soba	13.19
<b>Ukupno</b>	<b>58.51</b>



Stambeni objekat na k.p.16604, Zemun

# STAN 03 - dvosoban stan

prizemlje

Stan 03 - Dvosoban stan	m <sup>2</sup>
1 ulaz	5.42
2 hodnik	4.37
3 kupatilo	6.03
4 kuhinja	5.58
5 spavaća soba	9.25
6 trpezarija	8.10
7 dnevna soba	16.67
8 spavaća soba	12.40
<b>Ukupno zatvoreno</b>	<b>67.82</b>
9 lođa	3.08
<b>Ukupno</b>	<b>70.90</b>



# STAN 04 - dvosoban stan prizemlje

Stan 04 - Dvosoban stan	m <sup>2</sup>
1 ulaz	3.22
2 hodnik	1.28
3 kupatilo	5.74
4 kuhinja	4.53
5 spavaća soba	6.83
6 trpezarija	8.32
7 dnevna soba	16.67
8 spavaća soba	13.19
<b>Ukupno</b>	<b>59.78</b>

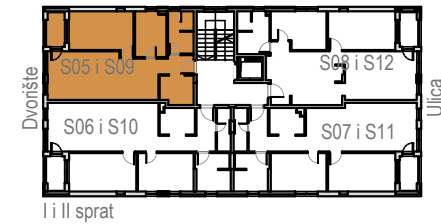


GOĐINJA  
VALOŠ  
*gde snovi postaju stvarnost*

Stambeni objekat na k.p.16604, Zemun

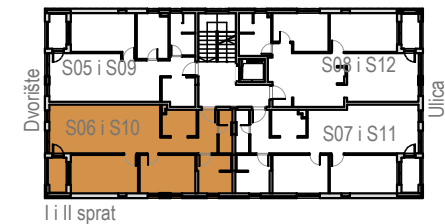
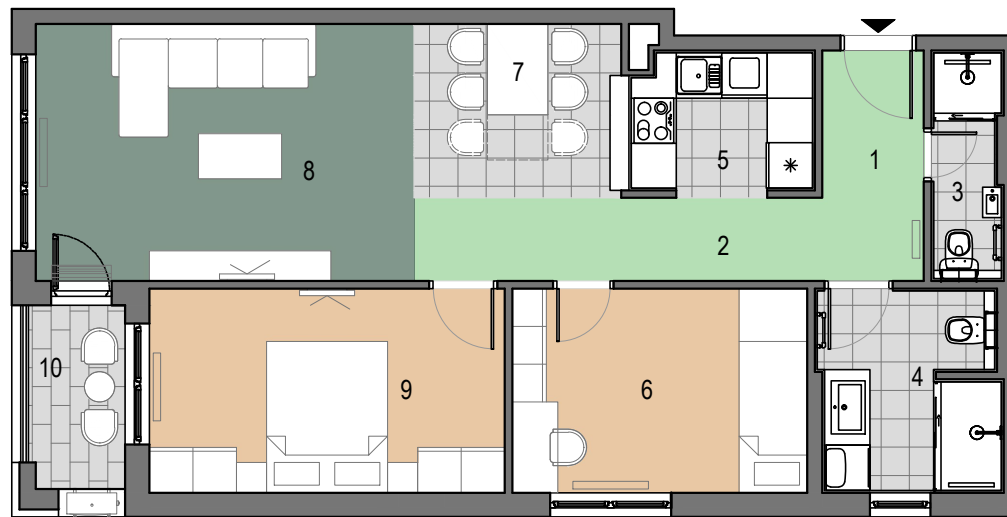
# STAN 05 i 09 - dvosoban stan I i II sprat

Stan 05 i 09 - Dvosoban stan	m <sup>2</sup>
1 ulaz	3.05
2 kupatilo	4.79
3 kuhinja	4.53
4 spavaća soba	6.71
5 trpezarija	7.63
6 dnevna soba	16.67
7 spavaća soba	12.29
<b>Ukupno zatvoreno</b>	<b>55.67</b>
8 lođa	3.08
<b>Ukupno</b>	<b>58.75</b>



# STAN 06 i 10 - dvosoban stan I i II sprat

Stan 06 i 10 - Dvosoban stan	m <sup>2</sup>
1 ulaz	3.91
2 hodnik	2.86
3 toalet	2.60
4 kupatilo	6.04
5 kuhinja	4.36
6 spavaća soba	10.27
7 trpezarija	9.21
8 dnevna soba	16.67
9 spavaća soba	12.40
<b>Ukupno zatvoreno</b>	<b>68.32</b>
10 lođa	3.08
<b>Ukupno</b>	<b>71.40</b>



  
**GOĐINJA  
VALOŠ**  
*gde snovi postaju stvarnost*

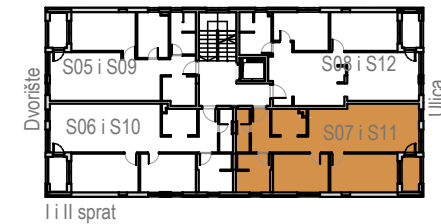
Stambeni objekat na k.p.16604, Zemun



# STAN 07 i 11 - dvosoban stan

## I i II sprat

Stan 07 i 11 - Dvosoban stan	m <sup>2</sup>
1 ulaz	3.91
2 hodnik	2.86
3 toalet	2.60
4 kupatilo	6.04
5 kuhinja	4.18
6 spavaća soba	10.27
7 trpezarija	8.25
8 dnevna soba	16.67
9 spavaća soba	12.40
<b>Ukupno zatvoreno</b>	<b>67.18</b>
10 lođa	3.08
<b>Ukupno</b>	<b>70.26</b>

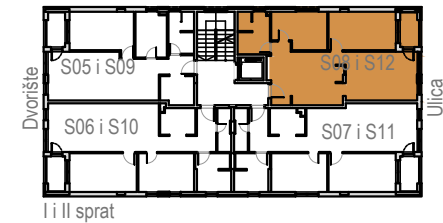
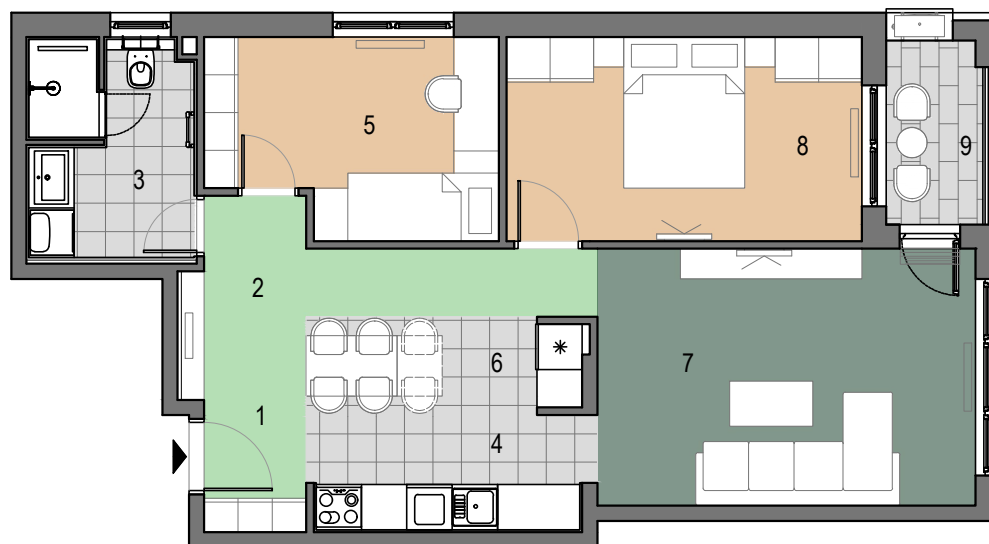


Stambeni objekat na k.p.16604, Zemun

# STAN 08 i 12 - dvosoban stan

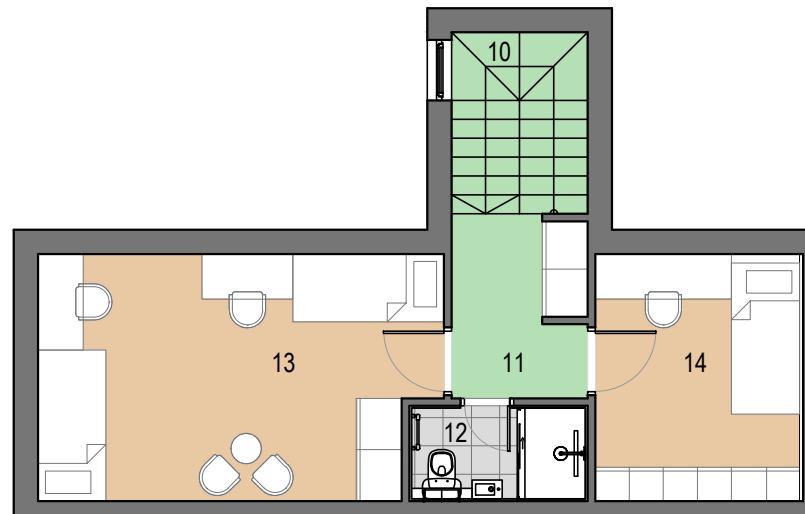
## I i II sprat

Stan 08 i 12 - Dvosoban stan	m <sup>2</sup>
1 ulaz	2.29
2 hodnik	4.02
3 kupatilo	6.03
4 kuhinja	5.58
5 spavaća soba	9.25
6 trpezarija	8.10
7 dnevna soba	16.67
8 spavaća soba	12.40
<b>Ukupno zatvoreno</b>	<b>64.34</b>
9 lođa	3.08
<b>Ukupno</b>	<b>67.42</b>

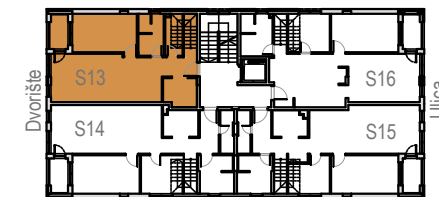


# STAN 13 - duplex troiposoban stan

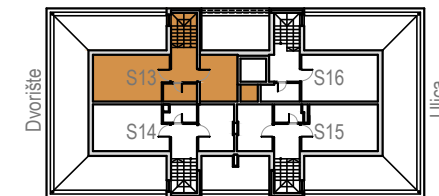
## III sprat i potkrovlje



Stan 13 - Duplex troiposoban stan	m <sup>2</sup>
1 ulaz	3.80
2 hodnik	3.54
3 kupatilo	4.79
4 kuhinja	4.53
5 ostava	3.30
6 trpezarija	4.73
7 dnevna soba	16.67
8 spavaća soba	12.08
10 stepenice	4.19
11 predprostor	4.10
12 kupatilo	2.76
13 spavaća soba	16.45
14 spavaća soba	8.66
<b>Ukupno zatvoreno</b>	<b>89.60</b>
9 lođa	3.08
<b>Ukupno</b>	<b>92.68</b>



III sprat

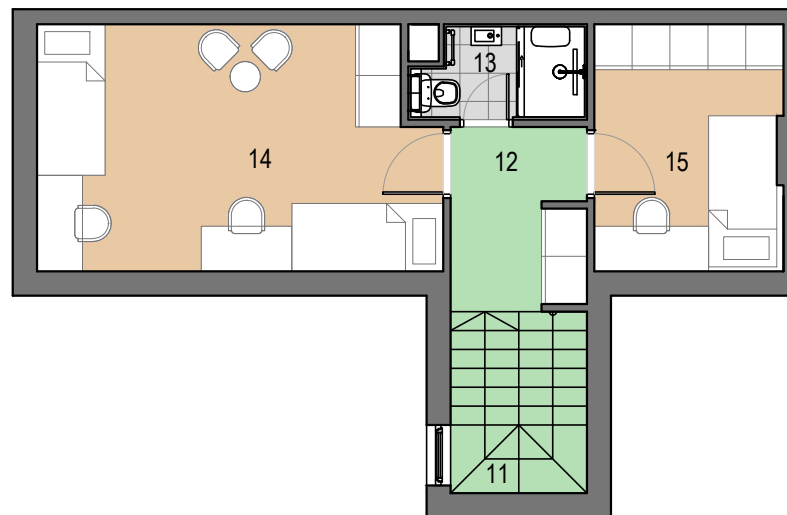


Potkrovlje



# STAN 14 - duplex troiposoban stan

III sprat i potkrovlje



Stan 14 - Duplex troiposoban stan	m <sup>2</sup>
1 ulaz	3.91
2 hodnik	3.22
3 toalet	2.60
4 kupatilo	6.04
5 kuhinja	4.36
6 spavaća soba	7.61
7 trpezarija	9.21
8 dnevna soba	16.67
9 spavaća soba	12.40
11 stepenice	4.19
12 predprostor	4.10
13 kupatilo	2.50
14 spavaća soba	16.45
15 spavaća soba	7.86
<b>Ukupno zatvoreno</b>	<b>100.12</b>
10 lođa	3.08
<b>Ukupno</b>	<b>104.20</b>



III sprat

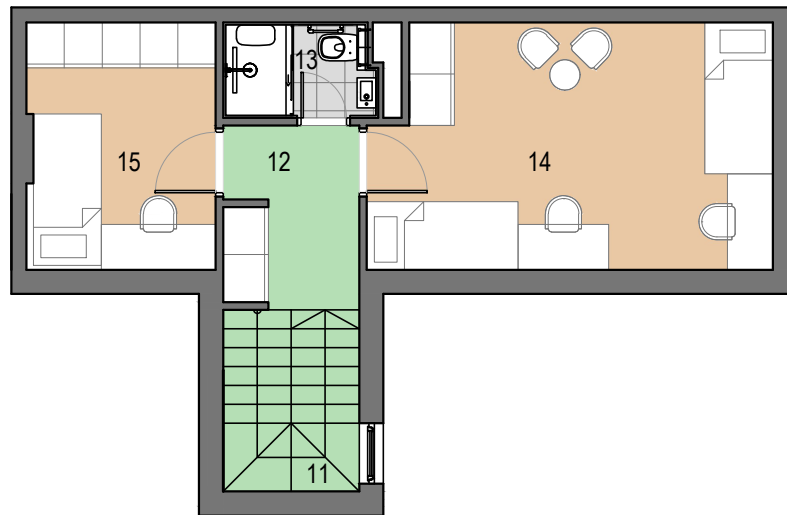
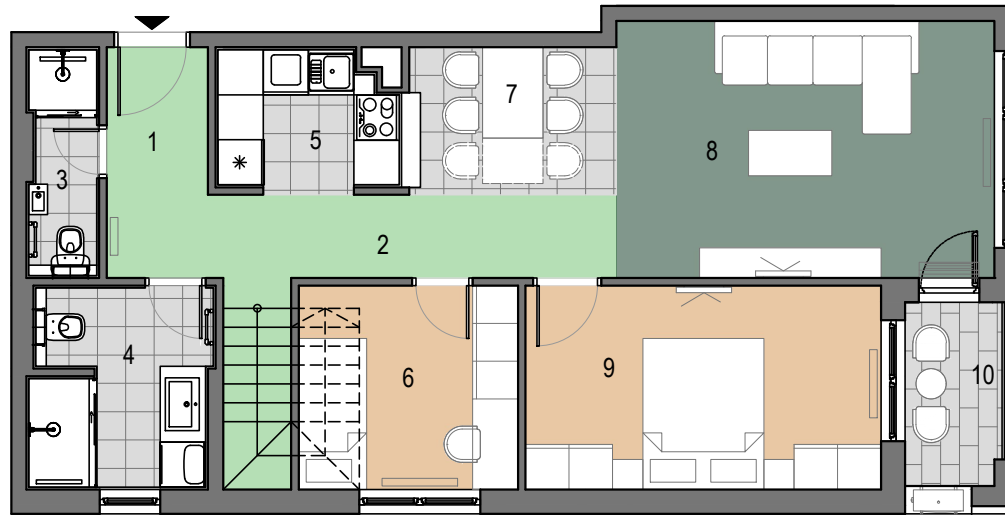


Pc

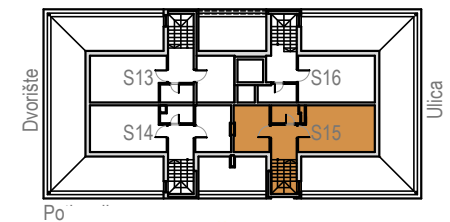


# STAN 15 - duplex troiposoban stan

## III sprat i potkrovlje

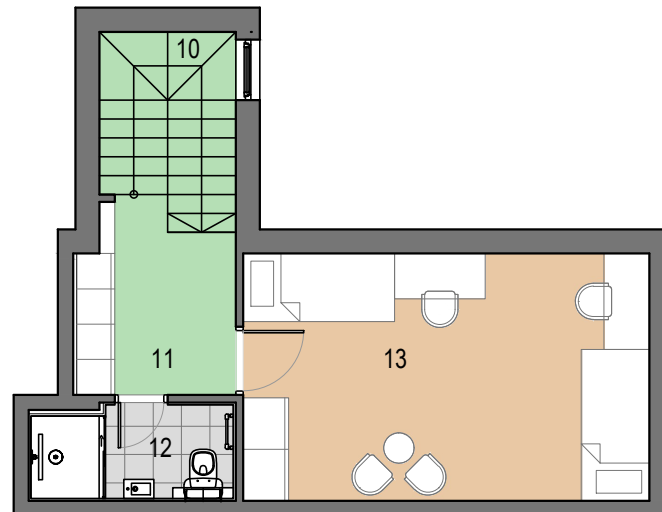
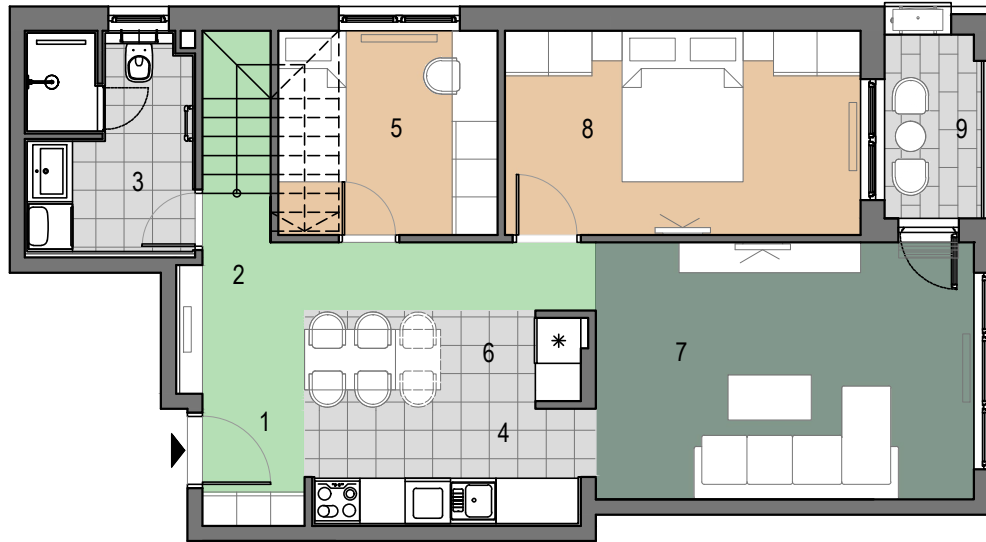


Stan 15 - Duplex troiposoban stan		m <sup>2</sup>
1 ulaz		3.91
2 hodnik		3.22
3 toalet		2.60
4 kupatilo		6.04
5 kuhinja		4.18
6 spavaća soba		7.61
7 trpezarija		8.25
8 dnevna soba		16.67
9 spavaća soba		12.40
11 stepenice		4.19
12 predprostor		4.10
13 kupatilo		2.30
14 spavaća soba		16.45
15 spavaća soba		7.86
<b>Ukupno zatvoreno</b>		<b>99.78</b>
10 lođa		3.08
<b>Ukupno</b>		<b>102.86</b>



# STAN 16 - duplex trosoban stan

## III sprat i potkrovlje



Stan 16 - Duplex trosoban stan	m <sup>2</sup>
1 ulaz	2.29
2 hodnik	3.68
3 kupatilo	6.03
4 kuhinja	5.58
5 spavaća soba	7.61
6 trpezarija	8.10
7 dnevna soba	16.67
8 spavaća soba	12.40
10 stepenice	4.19
11 predprostor	4.71
12 kupatilo	3.17
13 spavaća soba	17.22
<b>Ukupno zatvoreno</b>	<b>91.65</b>
9 lođa	3.08
<b>Ukupno</b>	<b>94.73</b>

